

2024.11



Oil Pattern Distance: 44 Feet	Reverse Brush Drop: 33 Feet	Oil Per Board: 50 uL
Forward Oil Total: 14.9 mL	Reverse Oil Total: 9.3 mL	Volume Oil Total: 24.2 mL
Forward Boards Crossed: 298 Boards	Reverse Boards Crossed: 186 Boards	Total Boards Crossed: 484 Boards

	Start	Stop	Loads	Speed	Crossed	Start	End	Feet	T.Oil
1	4L	4R	1	14	33	0.0	0.0	0.0	1650
2	5L	5R	1	14	31	0.0	1.9	1.9	1550
3	7L	7R	2	18	54	1.9	7.0	5.1	2700
4	9L	9R	3	18	69	7.0	14.6	7.6	3450
5	9L	9R	3	18	69	14.6	22.2	7.6	3450
6	10L	10R	2	26	42	22.2	29.5	7.3	2100
7	2L	2R	0	26	0	29.5	40.0	10.5	0
8	2L	2R	0	30	0	40.0	44.0	4.0	0

Navigation: Forward Reverse More

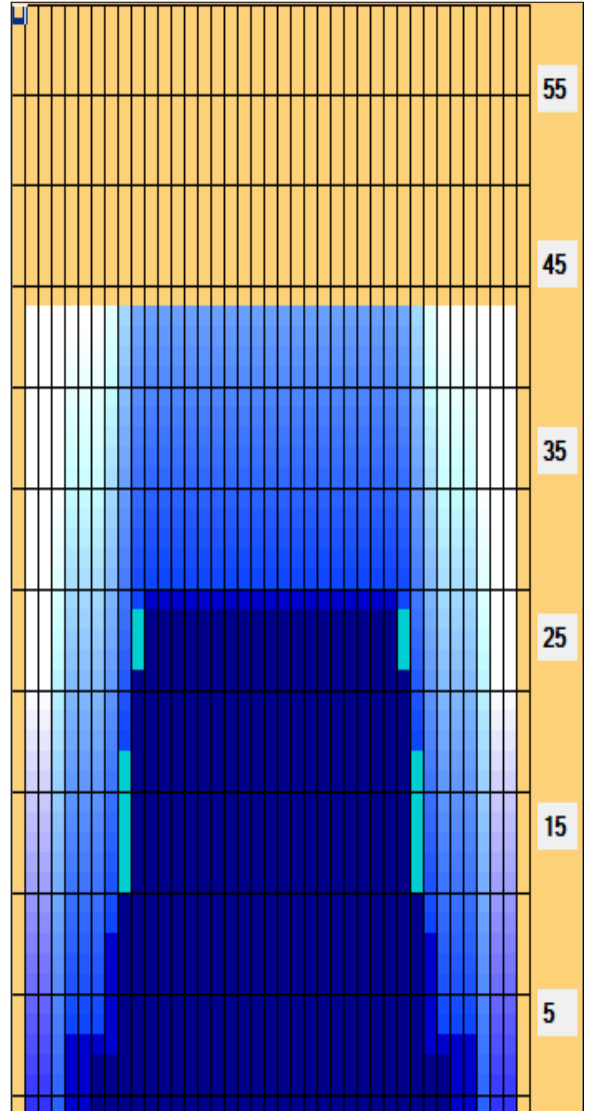
	Start	Stop	Loads	Speed	Crossed	Start	End	Feet	T.Oil
1	2L	2R	0	26	0	44.0	30.0	-14.0	0
2	11L	11R	1	26	19	30.0	26.4	-3.6	950
3	10L	10R	3	26	63	26.4	15.4	-11.0	3150
4	9L	9R	1	18	23	15.4	12.9	-2.5	1150
5	8L	8R	2	18	50	12.9	7.8	-5.1	2500
6	5L	5R	1	14	31	7.8	5.9	-1.9	1550
7	2L	2R	0	10	0	5.9	0.0	-5.9	0

Navigation: Forward Reverse More

Conditioner:
Type In or Select One

TransferType:
Type In or Select One

- Forward
- Reverse
- Combined
- Buff



Item Description	3L-7L:18L-18R Outside Track:Middle	8L-12L:18L-18R Middle Track:Middle	13L-17L:18L-18R Inside Track:Middle	18L-18R:17R-13R Middle: Inside Track	18L-18R:12R-8R Middle:Middle Track	18L-18R:7R-3R Middle:Outside Track
Track Zone Ratio	8.33	1.25	1	1	1.25	8.33

