

2024.9



| | | |
|---|---|---|
| Oil Pattern Distance: 45 Feet | Reverse Brush Drop: 35 Feet | Oil Per Board: 50 uL |
| Forward Oil Total: 14.2 mL | Reverse Oil Total: 8.9 mL | Volume Oil Total: 23.1 mL |
| Forward Boards Crossed: 284 Boards | Reverse Boards Crossed: 178 Boards | Total Boards Crossed: 462 Boards |

| | Start | Stop | Loads | Speed | Crossed | Start | End | Feet | T.Oil |
|---|-------|------|-------|-------|---------|-------|------|------|-------|
| 1 | 4L | 4R | 1 | 14 | 33 | 0.0 | 0.0 | 0.0 | 1650 |
| 2 | 5L | 5R | 2 | 18 | 62 | 0.0 | 5.1 | 5.1 | 3100 |
| 3 | 7L | 7R | 1 | 18 | 27 | 5.1 | 7.6 | 2.5 | 1350 |
| 4 | 9L | 9R | 1 | 18 | 23 | 7.6 | 10.1 | 2.5 | 1150 |
| 5 | 10L | 10R | 3 | 22 | 63 | 10.1 | 19.4 | 9.3 | 3150 |
| 6 | 10L | 10R | 1 | 26 | 21 | 19.4 | 23.0 | 3.6 | 1050 |
| 7 | 11L | 11R | 2 | 26 | 38 | 23.0 | 30.3 | 7.3 | 1900 |
| 8 | 12L | 12R | 1 | 26 | 17 | 30.3 | 33.9 | 3.6 | 850 |
| 9 | 2L | 2R | 0 | 26 | 0 | 33.9 | 45.0 | 11.1 | 0 |

Navigation: Forward Reverse More

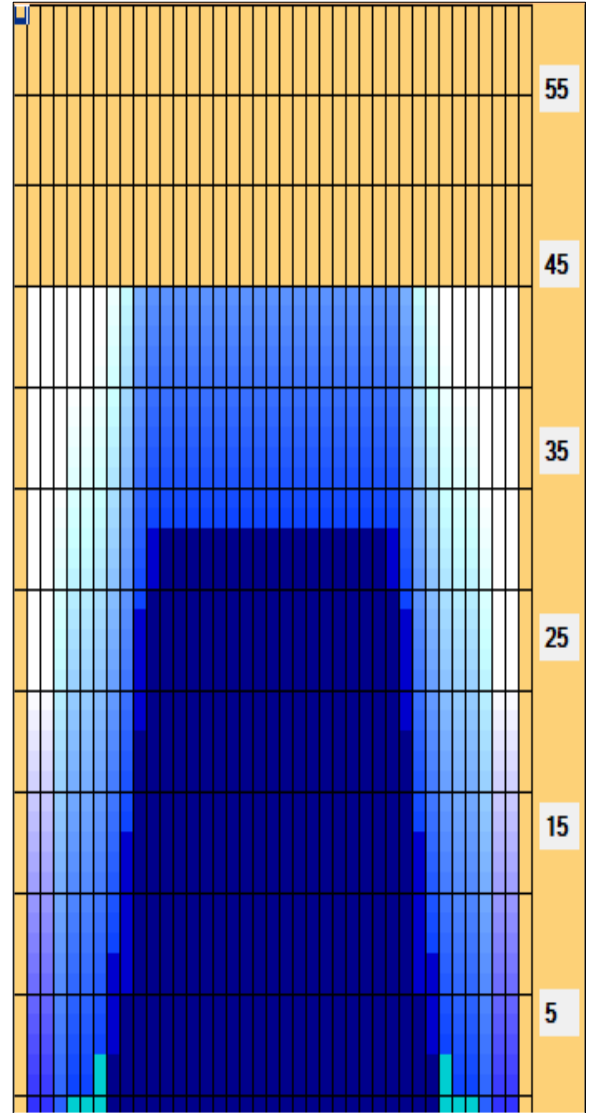
| | Start | Stop | Loads | Speed | Crossed | Start | End | Feet | T.Oil |
|---|-------|------|-------|-------|---------|-------|------|-------|-------|
| 1 | 2L | 2R | 0 | 26 | 0 | 45.0 | 33.0 | -12.0 | 0 |
| 2 | 11L | 11R | 1 | 26 | 19 | 33.0 | 29.4 | -3.6 | 950 |
| 3 | 10L | 10R | 3 | 26 | 63 | 29.4 | 18.4 | -11.0 | 3150 |
| 4 | 9L | 9R | 2 | 22 | 46 | 18.4 | 12.2 | -6.2 | 2300 |
| 5 | 8L | 8R | 2 | 14 | 50 | 12.2 | 8.3 | -3.9 | 2500 |
| 6 | 2L | 2R | 0 | 10 | 0 | 8.3 | 0.0 | -8.3 | 0 |

Navigation: Forward Reverse More

Conditioner:
Type In or Select One

TransferType:
Type In or Select One

- Forward
- Reverse
- Combined
- Buff



| Item Description | 3L-7L:18L-18R Outside Track:Middle | 8L-12L:18L-18R Middle Track:Middle | 13L-17L:18L-18R Inside Track:Middle | 18L-18R:17R-13R Middle: Inside Track | 18L-18R:12R-8R Middle:Middle Track | 18L-18R:7R-3R Middle:Outside Track |
|------------------|---------------------------------------|---------------------------------------|--|---|---------------------------------------|---------------------------------------|
| Track Zone Ratio | 9.09 | 1.43 | 1 | 1 | 1.43 | 9.09 |

