

2025.9



Oil Pattern Distance:	43 Feet	Reverse Brush Drop:	35 Feet	Oil Per Board:	50 uL
Forward Oil Total:	13.05 mL	Reverse Oil Total:	10.05 mL	Volume Oil Total:	23.1 mL
Forward Boards Crossed:	261 Boards	Reverse Boards Crossed:	201 Boards	Total Boards Crossed:	462 Boards

	Start	Stop	Loads	Speed	Crossed	Start	End	Feet	T.Oil
1	4L	4R	1	10	33	0.0	0.0	0.0	1650
2	5L	5R	1	10	31	0.0	1.4	1.4	1550
3	8L	8R	3	18	75	1.4	9.0	7.6	3750
4	10L	10R	3	22	63	9.0	18.3	9.3	3150
5	10L	10R	2	26	42	18.3	25.6	7.3	2100
6	12L	12R	1	26	17	25.6	29.2	3.6	850
7	2L	2R	0	26	0	29.2	43.0	13.8	0

Forward Reverse More

	Start	Stop	Loads	Speed	Crossed	Start	End	Feet	T.Oil
1	2L	2R	0	30	0	43.0	32.0	-11.0	0
2	11L	11R	2	26	38	32.0	24.7	-7.3	1900
3	11L	11R	1	22	19	24.7	21.6	-3.1	950
4	9L	9R	3	18	69	21.6	14.0	-7.6	3450
5	8L	8R	3	14	75	14.0	8.1	-5.9	3750
6	2L	2R	0	14	0	8.1	0.0	-8.1	0

Forward Reverse More

Conditioner:
Type In or Select
One

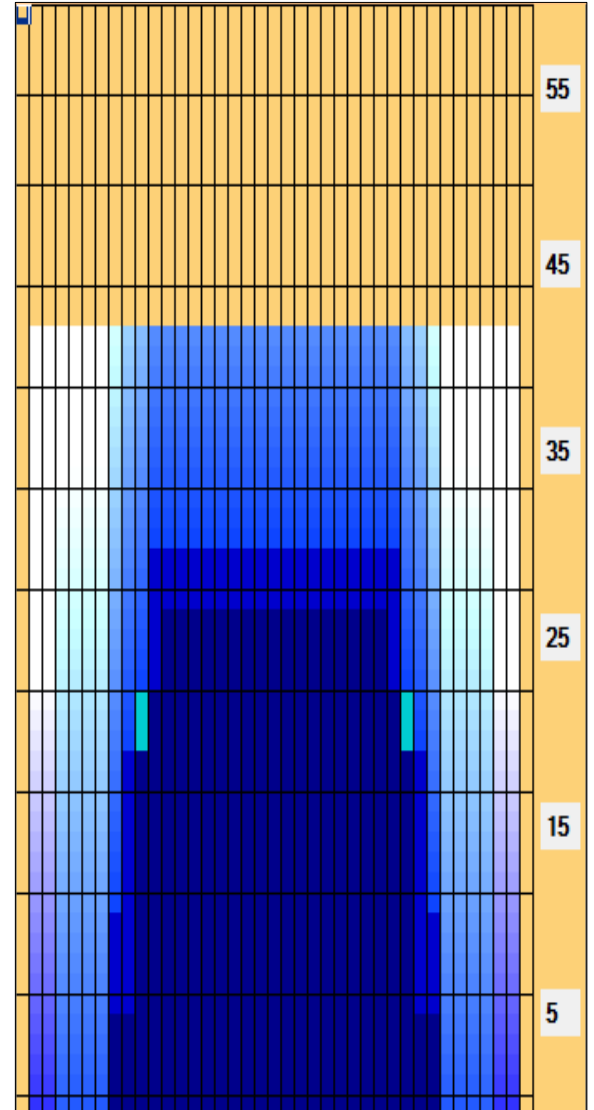
TransferType:
Type In or Select
One

Forward

Reverse

Combined

Buff



Item	3L-7L:18L-18R	8L-12L:18L-18R	13L-17L:18L-18R	18L-18R:17R-13R	18L-18R:12R-8R	18L-18R:7R-3R
Description	Outside Track:Middle	Middle Track:Middle	Inside Track:Middle	Middle:Inside Track	Middle:Middle Track	Middle:Outside Track
Track Zone Ratio	14.29	1.35	1	1	1.35	14.29

