

2026.4



Oil Pattern Distance: 41 Feet **Reverse Brush Drop:** 28 Feet **Oil Per Board:** 50 uL
Forward Oil Total: 14.2 mL **Reverse Oil Total:** 9.8 mL **Volume Oil Total:** 24 mL
Forward Boards Crossed: 284 Boards **Reverse Boards Crossed:** 196 Boards **Total Boards Crossed:** 480 Boards

| | Start | Stop | Loads | Speed | Crossed | Start | End | Feet | T.Oil |
|---|-------|------|-------|-------|---------|-------|------|------|-------|
| 1 | 3L | 3R | 1 | 10 | 35 | 0.0 | 0.0 | 0.0 | 1750 |
| 2 | 5L | 5R | 1 | 14 | 31 | 0.0 | 1.9 | 1.9 | 1550 |
| 3 | 9L | 9R | 2 | 18 | 46 | 1.9 | 7.0 | 5.1 | 2300 |
| 4 | 9L | 9R | 3 | 18 | 69 | 7.0 | 14.6 | 7.6 | 3450 |
| 5 | 10L | 10R | 2 | 22 | 42 | 14.6 | 20.8 | 6.2 | 2100 |
| 6 | 10L | 10R | 2 | 26 | 42 | 20.8 | 28.1 | 7.3 | 2100 |
| 7 | 11L | 11R | 1 | 26 | 19 | 28.1 | 31.7 | 3.6 | 950 |
| 8 | 11L | 11R | 0 | 26 | 0 | 31.7 | 41.0 | 9.3 | 0 |

Navigation: Forward Reverse More

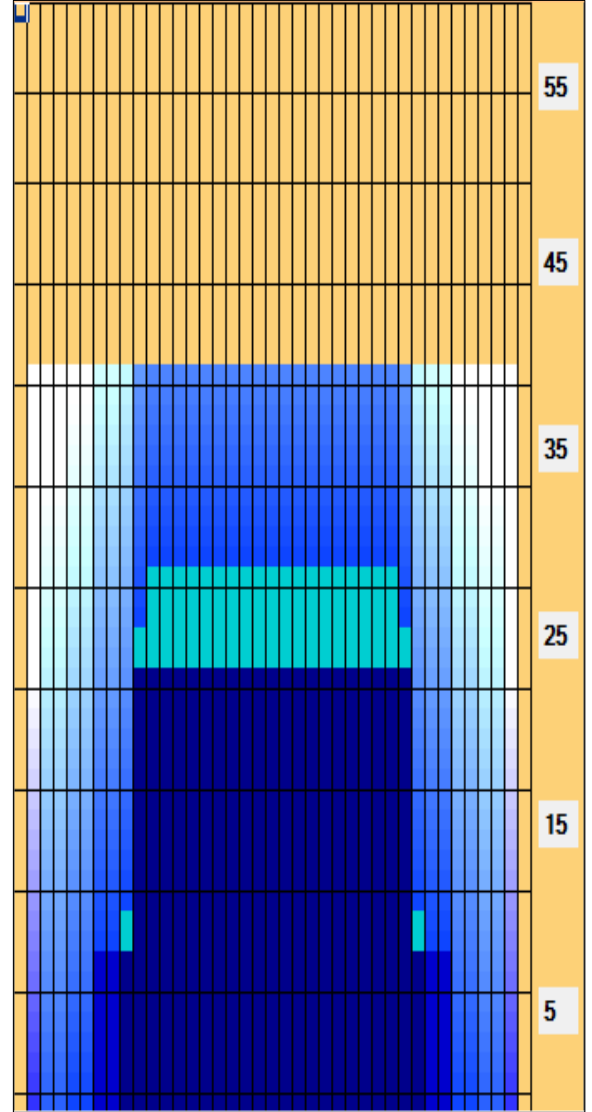
| | Start | Stop | Loads | Speed | Crossed | Start | End | Feet | T.Oil |
|---|-------|------|-------|-------|---------|-------|------|-------|-------|
| 1 | 2L | 2R | 0 | 30 | 0 | 41.0 | 26.0 | -15.0 | 0 |
| 2 | 10L | 10R | 2 | 26 | 42 | 26.0 | 18.7 | -7.3 | 2100 |
| 3 | 10L | 10R | 2 | 22 | 42 | 18.7 | 12.5 | -6.2 | 2100 |
| 4 | 7L | 7R | 1 | 22 | 27 | 12.5 | 9.4 | -3.1 | 1350 |
| 5 | 7L | 7R | 2 | 18 | 54 | 9.4 | 4.3 | -5.1 | 2700 |
| 6 | 5L | 5R | 1 | 14 | 31 | 4.3 | 2.4 | -1.9 | 1550 |
| 7 | 2L | 2R | 0 | 10 | 0 | 2.4 | 0.0 | -2.4 | 0 |

Navigation: Forward Reverse More

Conditioner:
 Type In or Select One

 TransferType:
 Type In or Select One

- Forward
- Reverse
- Combined
- Buff



| Item | 3L-7L:18L-18R | 8L-12L:18L-18R | 13L-17L:18L-18R | 18L-18R:17R-13R | 18L-18R:12R-8R | 18L-18R:7R-3R |
|------------------|----------------------|---------------------|---------------------|----------------------|---------------------|----------------------|
| Description | Outside Track:Middle | Middle Track:Middle | Inside Track:Middle | Middle: Inside Track | Middle:Middle Track | Middle:Outside Track |
| Track Zone Ratio | 7.14 | 1.32 | 1 | 1 | 1.32 | 7.14 |

