

2026.5



Oil Pattern Distance:	43 Feet	Reverse Brush Drop:	35 Feet	Oil Per Board:	50 uL
Forward Oil Total:	14.65 mL	Reverse Oil Total:	9.25 mL	Volume Oil Total:	23.9 mL
Forward Boards Crossed:	293 Boards	Reverse Boards Crossed:	185 Boards	Total Boards Crossed:	478 Boards

	Start	Stop	Loads	Speed	Crossed	Start	End	Feet	T.Oil
1	4L	4R	1	10	33	0.0	0.0	0.0	1650
2	6L	6R	2	10	58	0.0	2.8	2.8	2900
3	9L	9R	1	14	23	2.8	4.7	1.9	1150
4	9L	9R	2	18	46	4.7	9.8	5.1	2300
5	10L	10R	2	18	42	9.8	14.9	5.1	2100
6	10L	10R	2	22	42	14.9	21.1	6.2	2100
7	11L	11R	1	22	19	21.1	24.2	3.1	950
8	13L	13R	2	22	30	24.2	30.4	6.2	1500
9	2L	2R	0	26	0	30.4	43.0	12.6	0

Navigation: Forward Reverse More

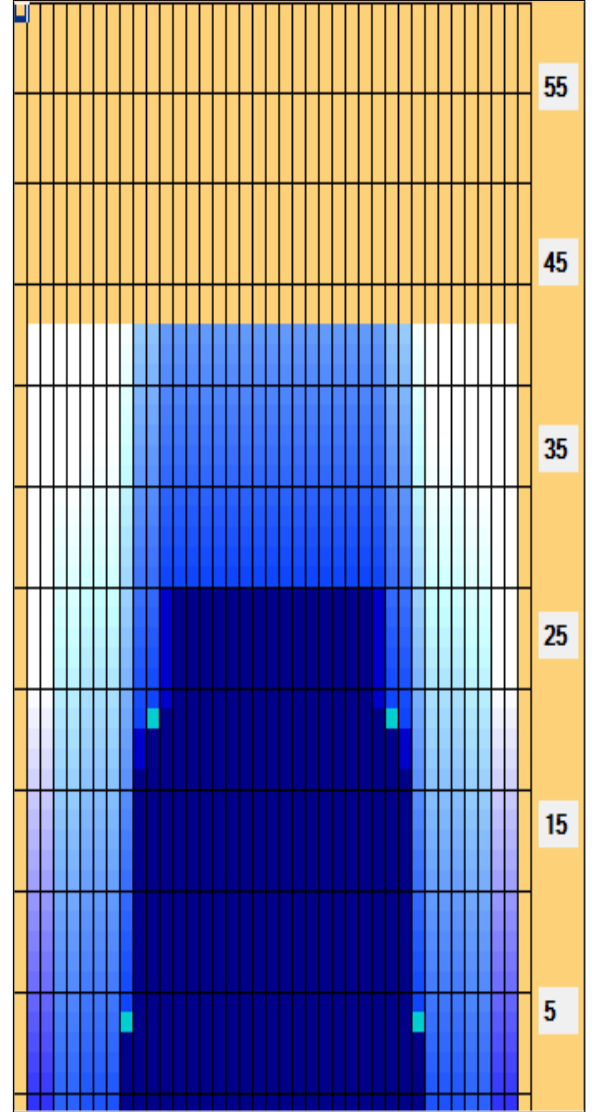
	Start	Stop	Loads	Speed	Crossed	Start	End	Feet	T.Oil
1	2L	2R	0	26	0	43.0	30.0	-13.0	0
2	12L	12R	2	26	34	30.0	22.7	-7.3	1700
3	10L	10R	2	26	42	22.7	15.4	-7.3	2100
4	10L	10R	3	18	63	15.4	7.8	-7.6	3150
5	9L	9R	2	14	46	7.8	3.9	-3.9	2300
6	2L	2R	0	10	0	3.9	0.0	-3.9	0

Navigation: Forward Reverse More

Conditioner:
Type In or Select One

TransferType:
Type In or Select One

- Forward
- Reverse
- Combined
- Buff



Item	3L-7L:18L-18R	8L-12L:18L-18R	13L-17L:18L-18R	18L-18R:17R-13R	18L-18R:12R-8R	18L-18R:7R-3R
Description	Outside Track:Middle	Middle Track:Middle	Inside Track:Middle	Middle: Inside Track	Middle:Middle Track	Middle:Outside Track
Track Zone Ratio	13.75	1.67	1	1	1.67	13.75

